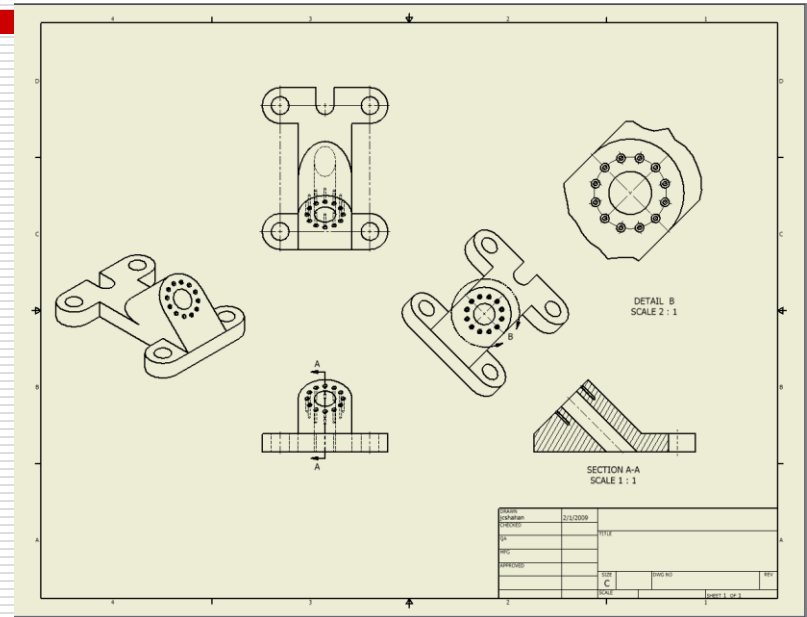
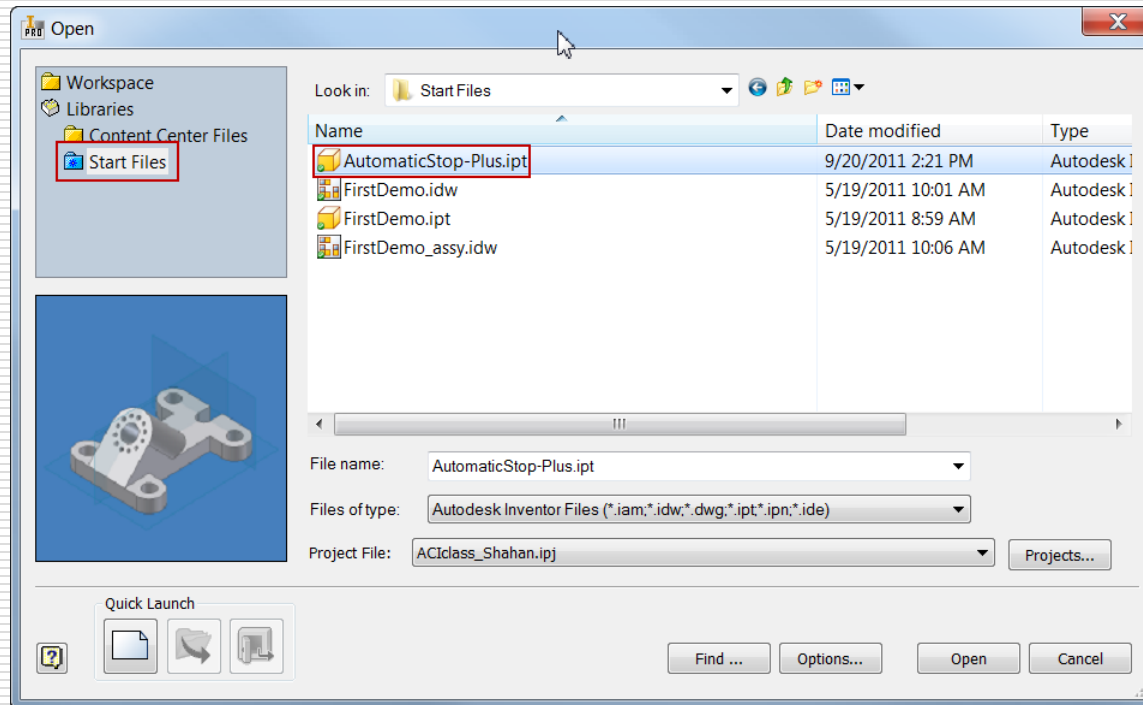


Drawing Views with Autodesk Inventor

- ☐ Base View
- ☐ Projected View
- ☐ Auxilliary View
- ☐ Section View
- ☐ Detail Views
- ☐ Centerlines / Center Marks



Open the Part File: From the Library

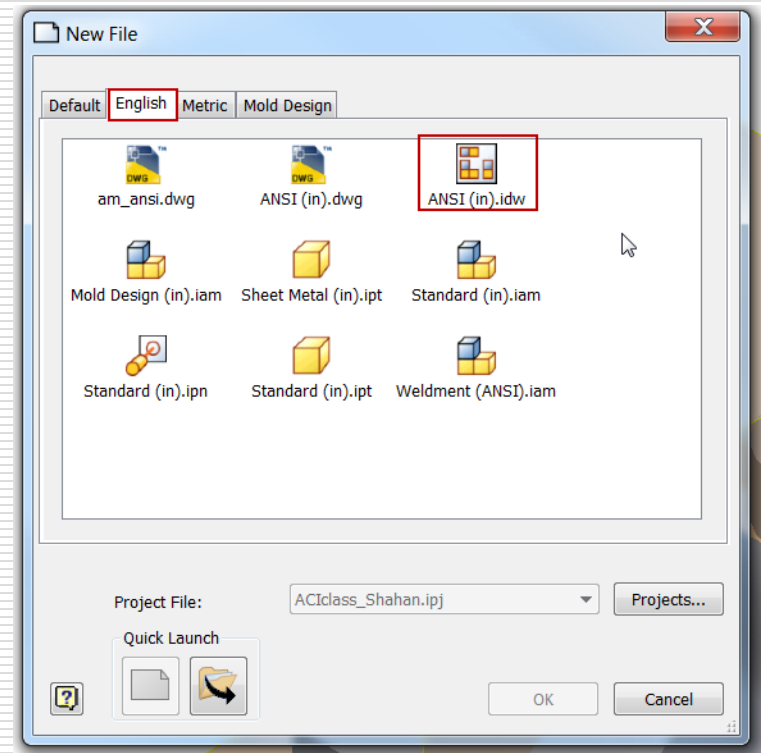


New Drawing



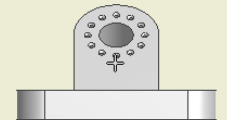
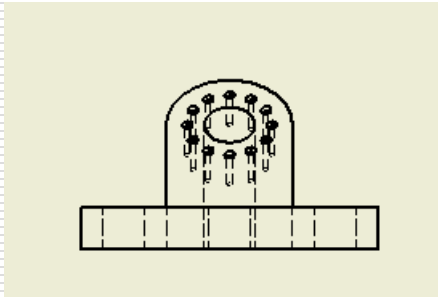
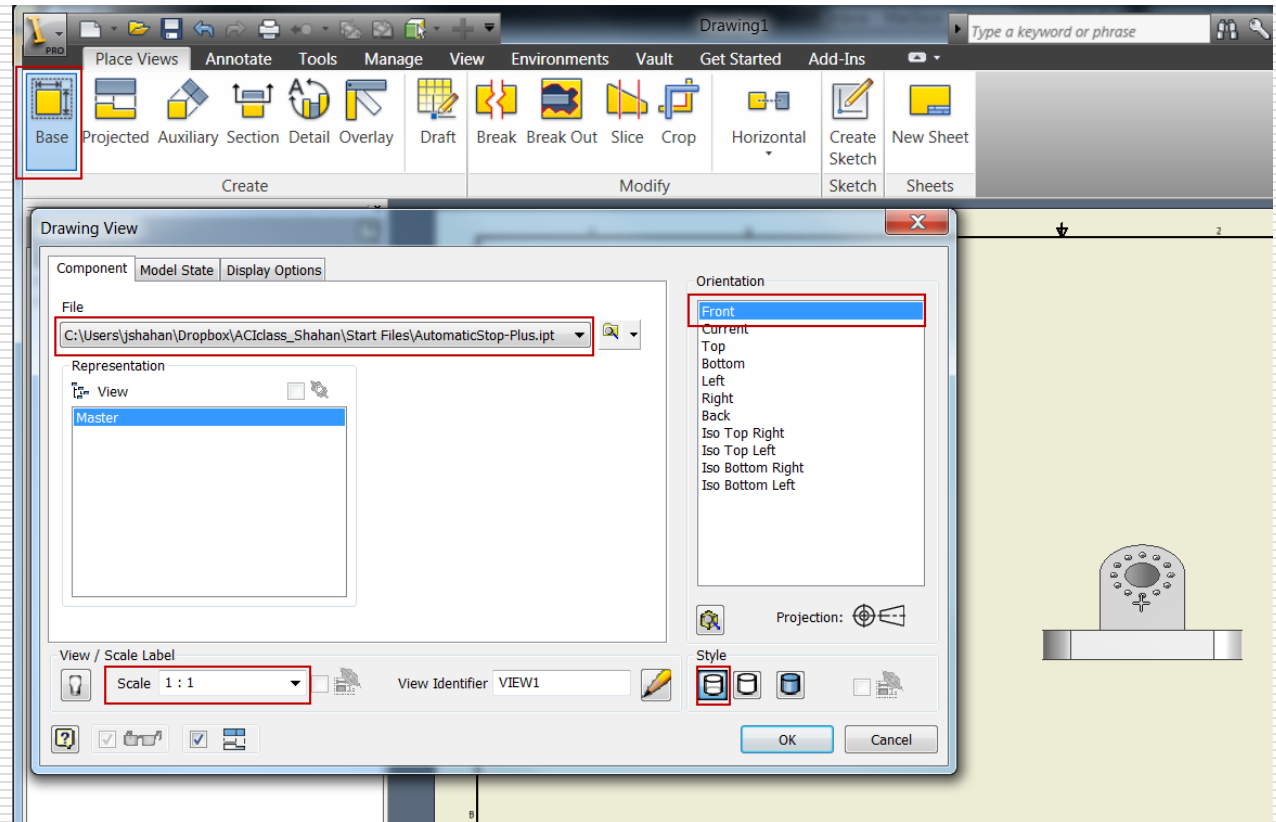
☐ English: English

☐ ANSI (in) .idw: ANSI (in).idw



Base View

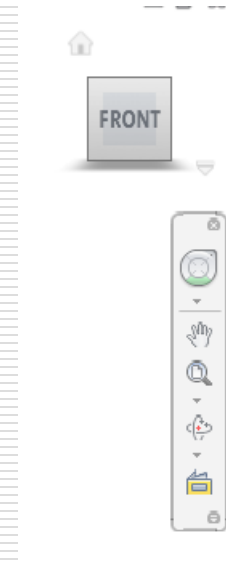
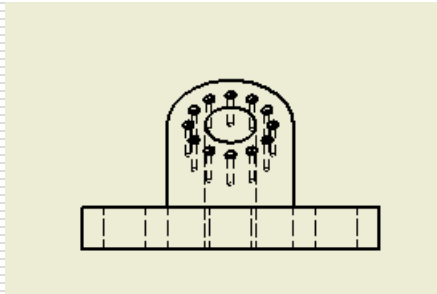
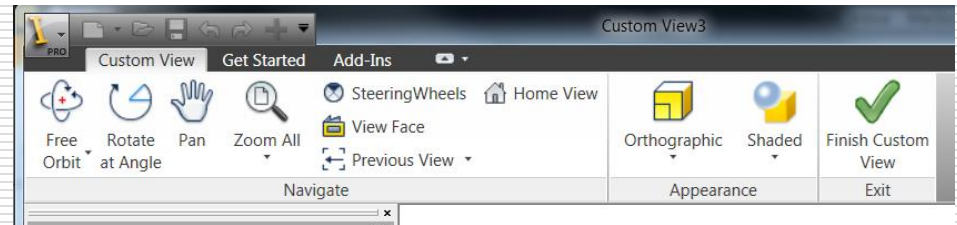
- ☐ File
- ☐ Orientation
- ☐ Style
- ☐ Scale



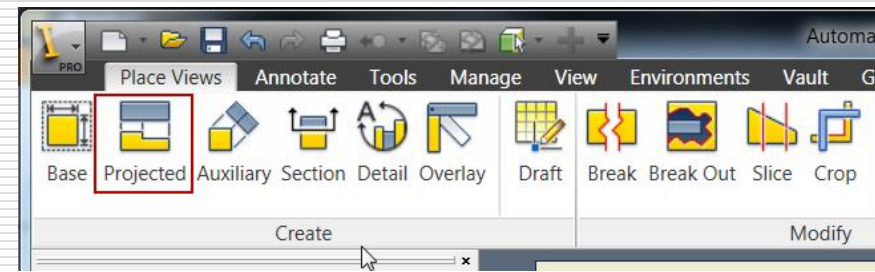
Base View

– Change View orientation

- Change the front view orientation (if needed)

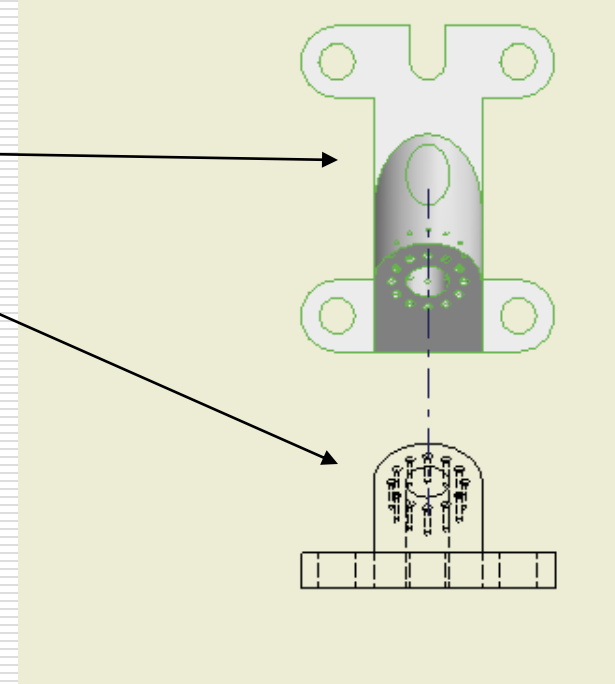
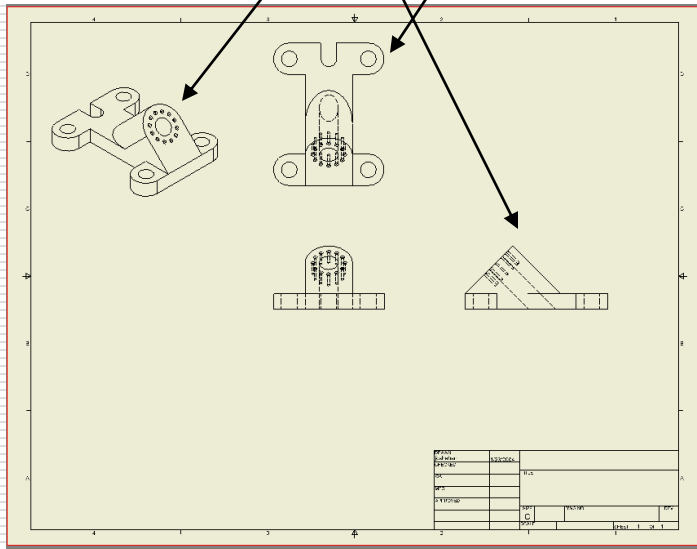


Projected Views



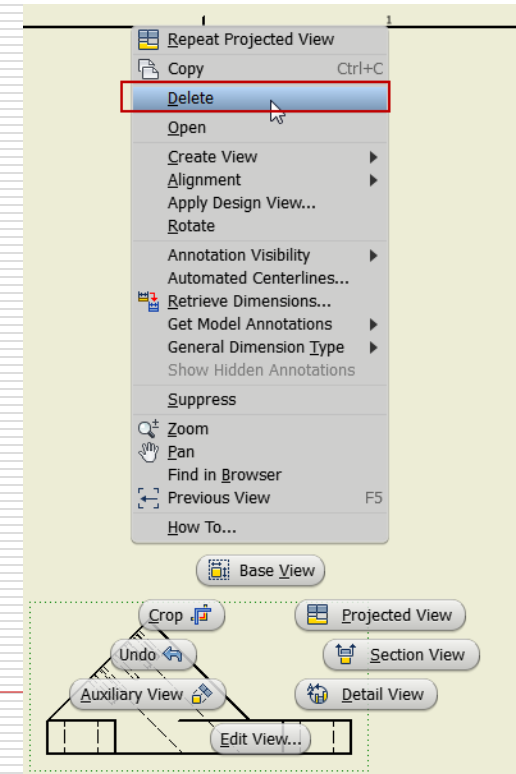
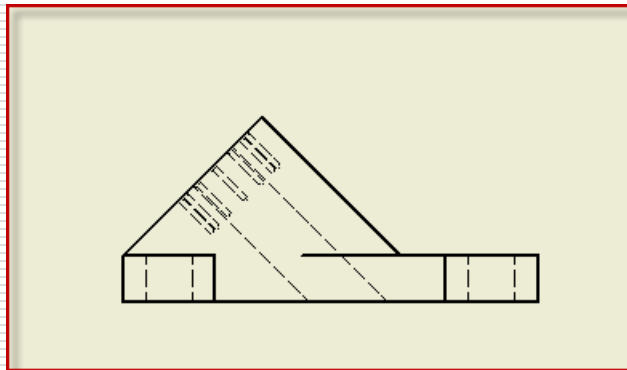
- Base View
- Projected View Location
- Views

- Top
- Right
- Iso (L,R,T)

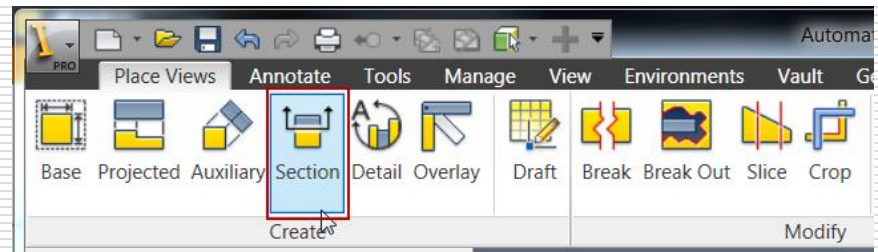


Right View - Section View

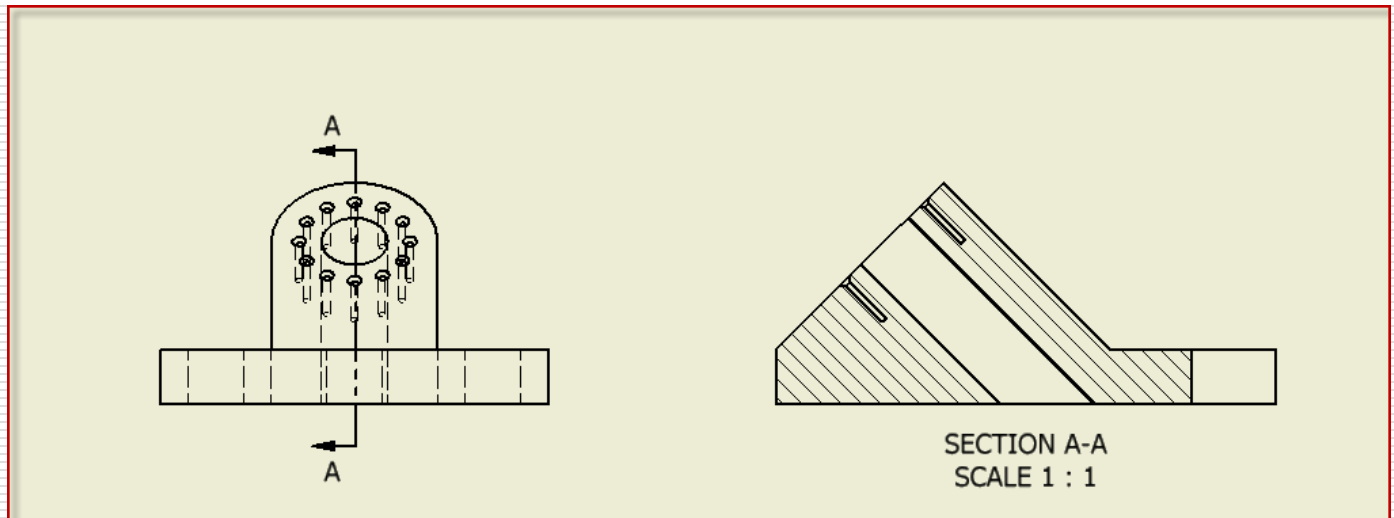
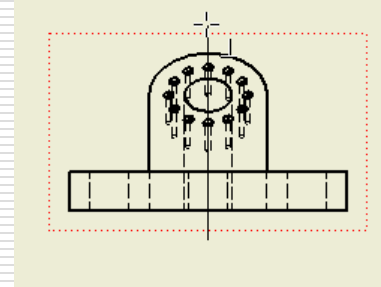
- ❑ Notice the right view
- ❑ Overlapping hidden
- ❑ This can be done better with a section view
- ❑ Delete the view
 - Select the right view, right mouse button



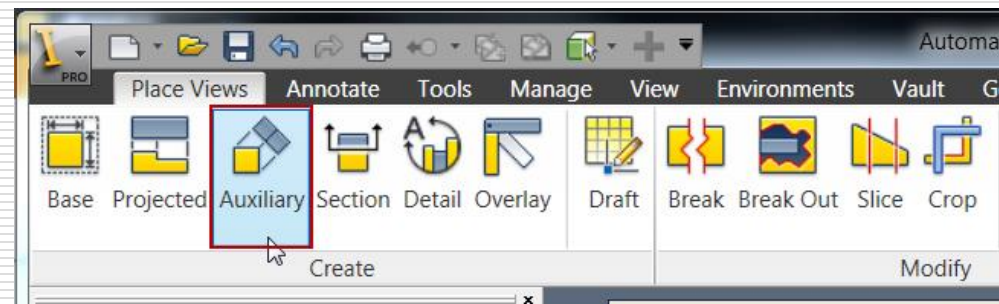
Section View



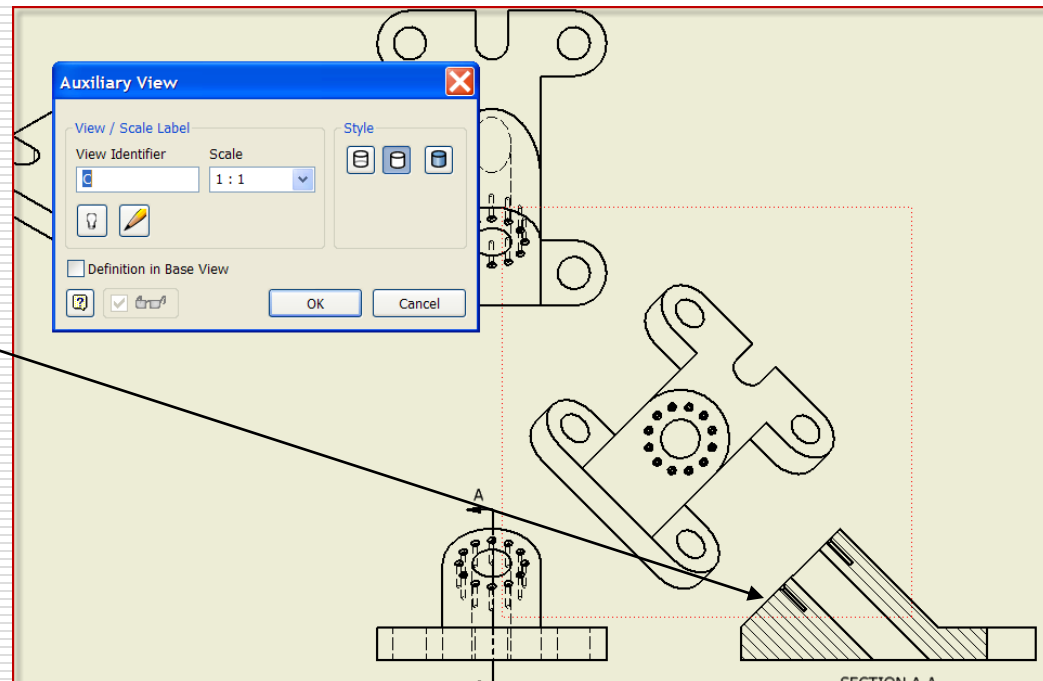
- ☐ Base View
- ☐ Sketch line (carefully locate points)
 - Through Center
 - Note Alignment
 - Watch Screen
- ☐ Place Section View



Auxiliary View

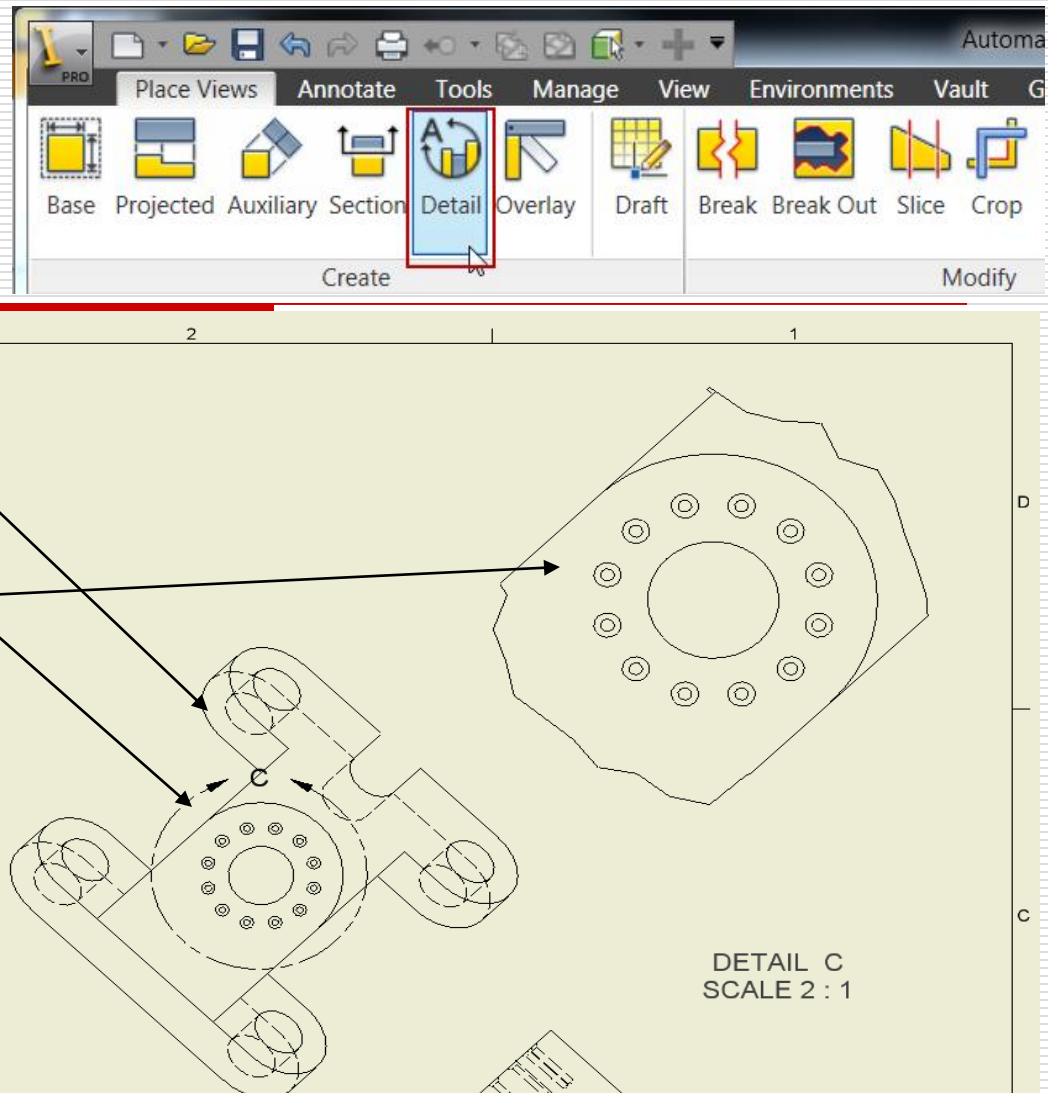


- ☐ Base View
- ☐ Edge
- ☐ Place View
- ☐ Other
- ☒ Scale
- ☒ Label
- ☒ Style



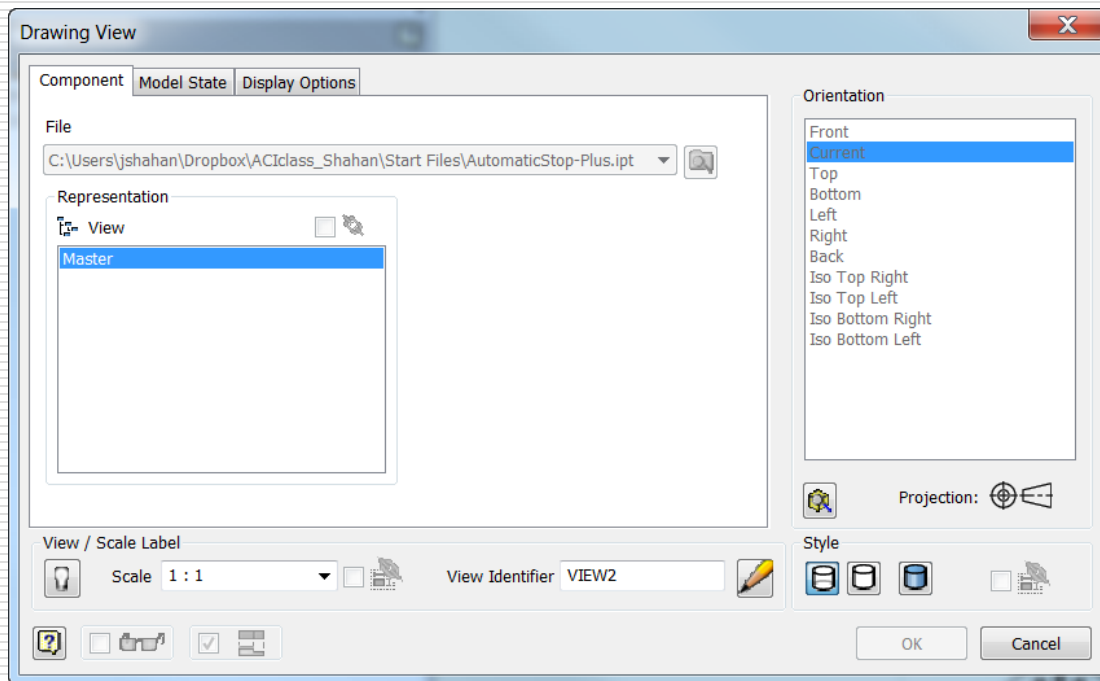
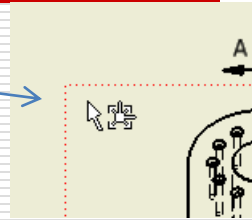
Detail View

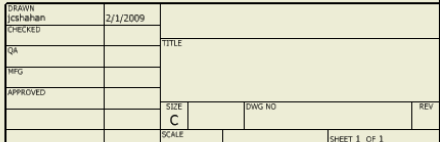
- ☐ Base View
- ☐ Circle around detail
- ☐ Place Detail View



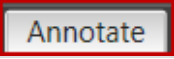

Modify the views

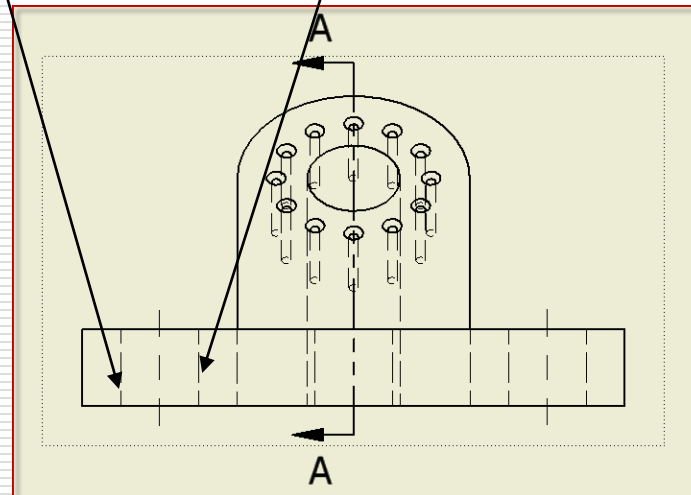
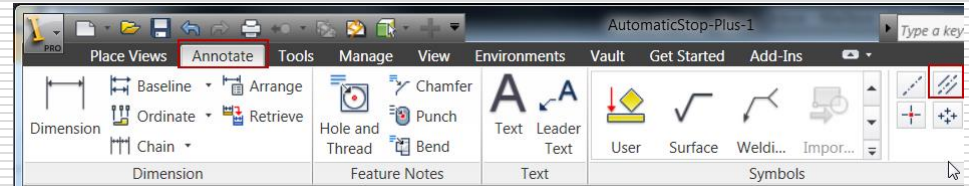
- ☐ Move Views
- ☐ Edit Views
 - <double click>





Finish Front View

- Centerlines
 - Annotate 
 - Centerline Bisector 
 - Edge 1
 - Edge 2



Finish the right view

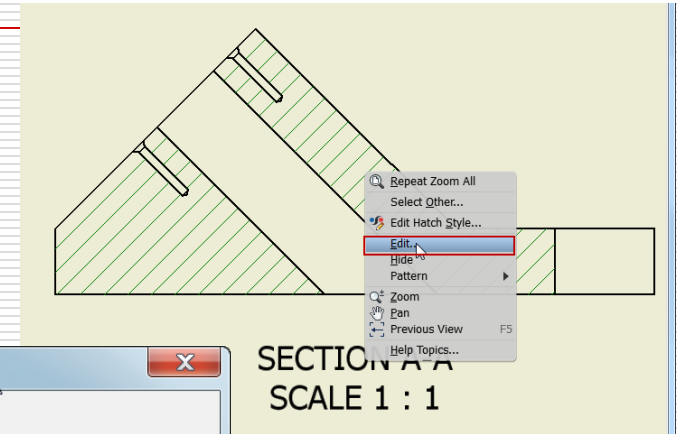
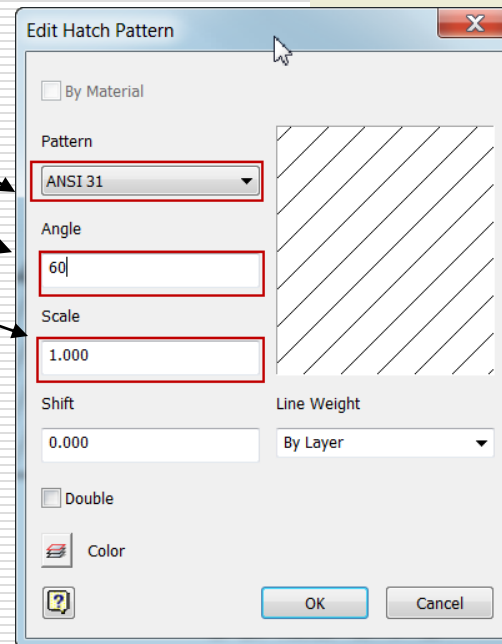
□ Section View

- <rmb>-select hatch
- Modify hatch (if needed)

□ Pattern

□ Angle

□ Scale

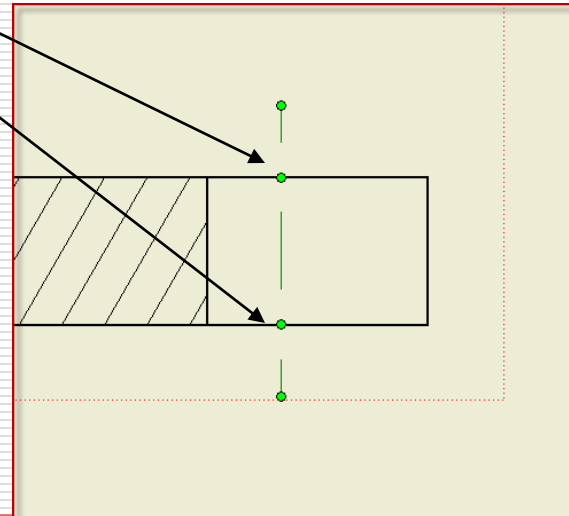
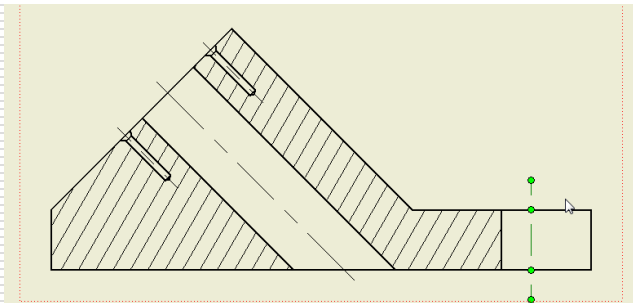


Finish Right View

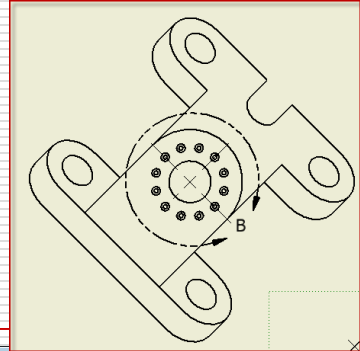
□ Centerline - Bisectors (3x) 

□ Centerline 

- Start
- End
- Create / Done



Finish Auxiliary View



☐ <rmb> select view

☐ Edit view

■ Style from base 

■ Remove hidden lines 

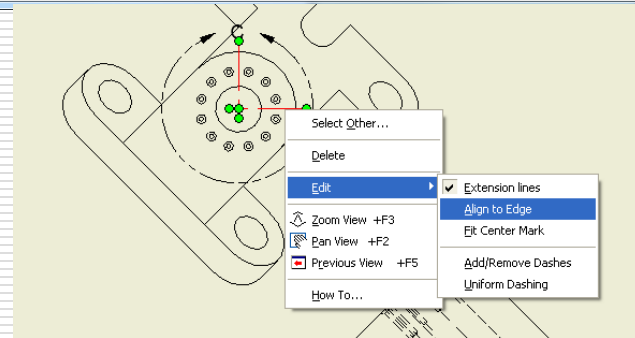
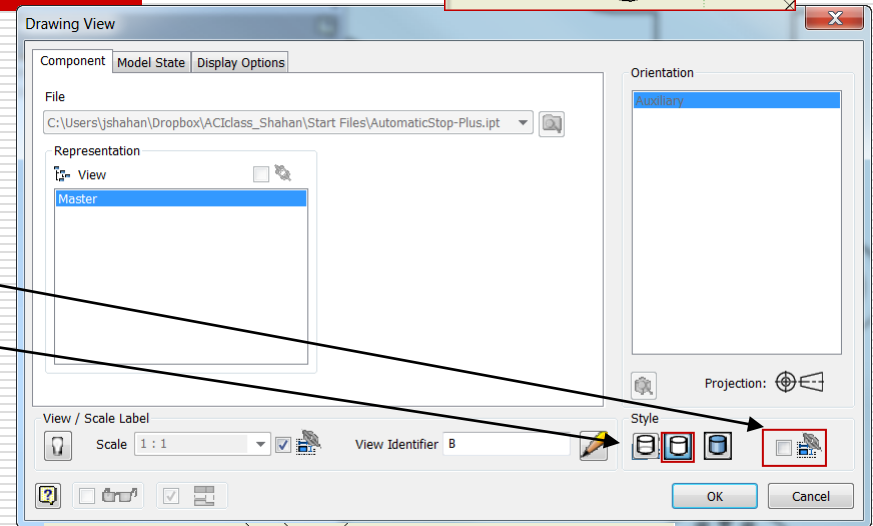
☐ If needed

☐ Center Mark

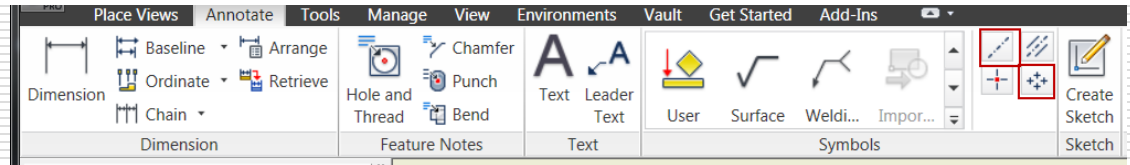
■ Select larger circle

■ <rmb> - Edit /Align
to edge (if necessary)

■ Adjust extensions



Finish Detail View



☐ Centered Pattern

- Central Feature
- Centered Features
- Create / Done


☐ Edit Center Mark

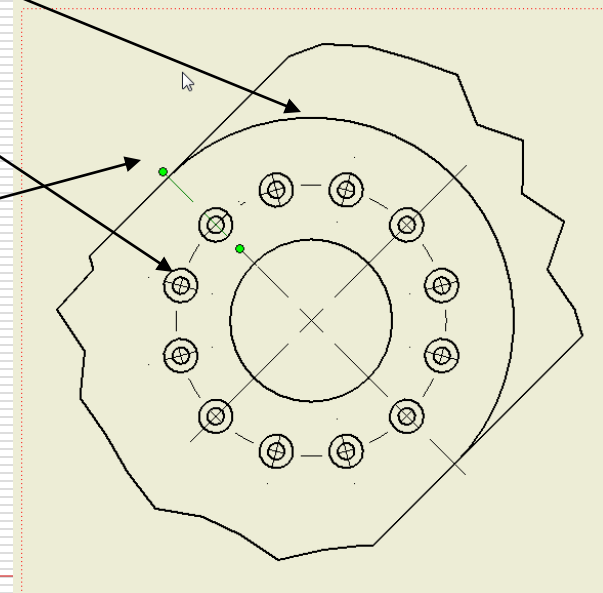
- Align to edge

☐ Extend

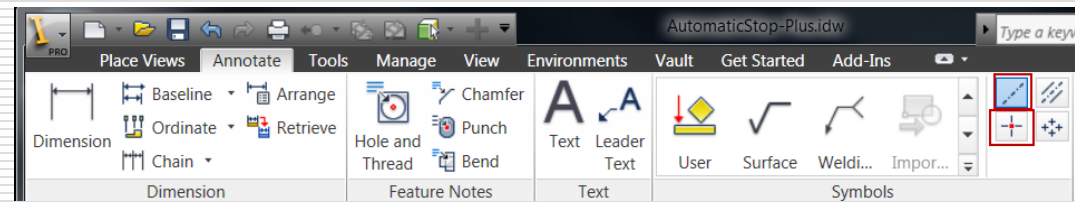
- appropriate lines



Note:

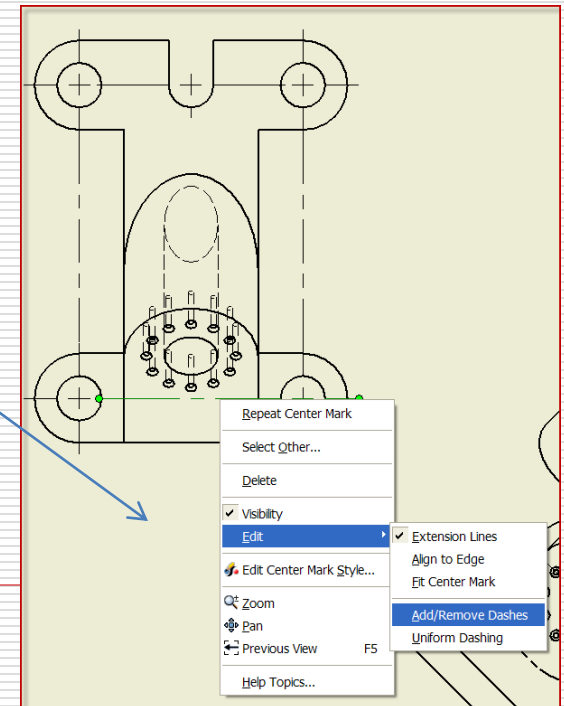
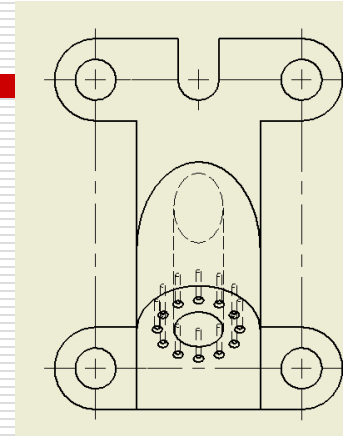
- software bug: The center will un-align itself
- Alternate: Use Centerline 



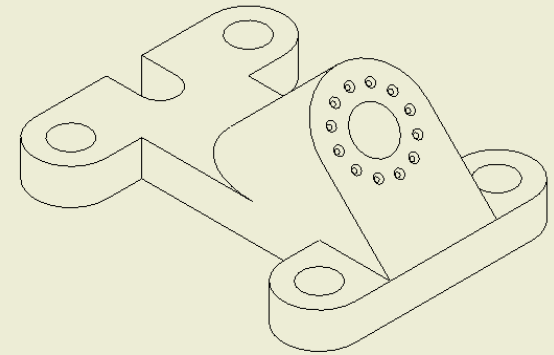
Finish Top View



- ☐ Centerlines 
- or
- ☐ Center Mark 
 - Extend Centerlines
 - Edit / Add dashes



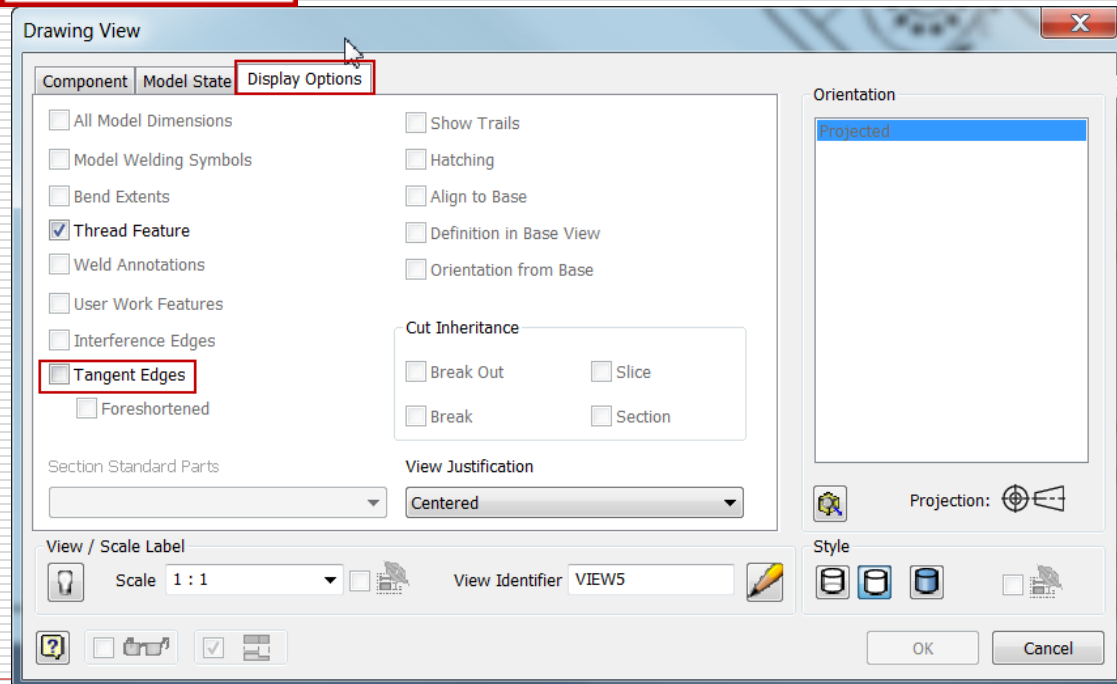
Isometric View



□ Select / Edit View <rmb>

■ Display Options Display Options

■ Tangent Edges Tangent Edges

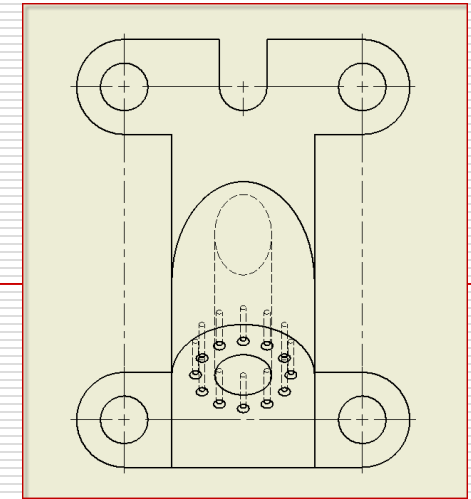


Line pattern spacing

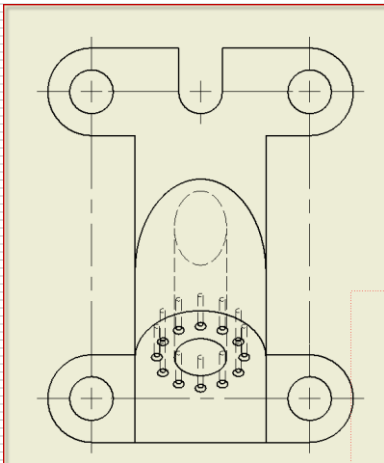
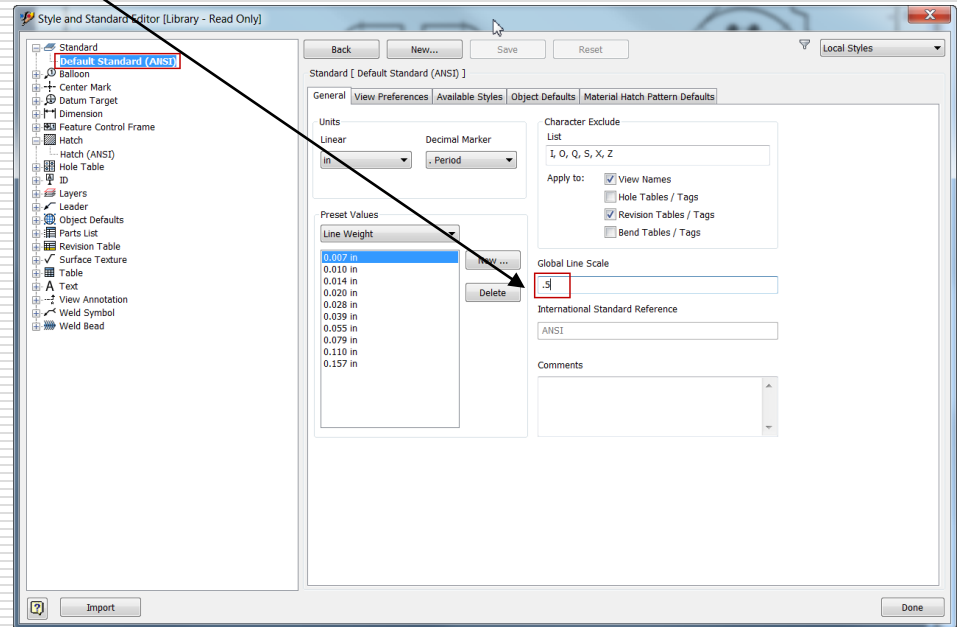
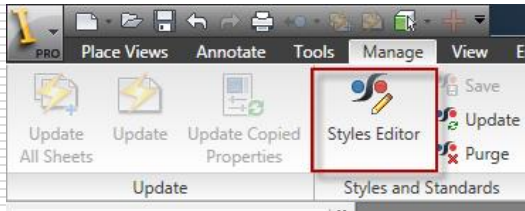
□ Manage / Styles Editor

- Default Standard
- Global Line Scale = .5

After:



Before:



Final Layout:

